

ARCHITECTURAL SERIES

MEDIUM - DRYWALL, PLASTER, & WALLPAPER

FOR USE WITH AS68RS SPEAKER & BPS8 + ASBPC6RS

MOUNTING PLATFORM SPECIFICATIONS

Applications:

Gypsum mounting platforms are designed for ceiling installations and they contain an integrated back mounting bracket that seamlessly integrates the Architectural Series speaker into the mounting system. The mounting platforms are available in panel thicknesses of 1/2" and 5/8" and for a variety of wall coverings and finishes including: level 5 drywall, textured drywall, wallpaper, and plaster.

Flush Finish:

Platform technology allows for a zero-sightline, flush finish. Paint-ready, one piece grilles provide flexible finishing options.

Accessories:

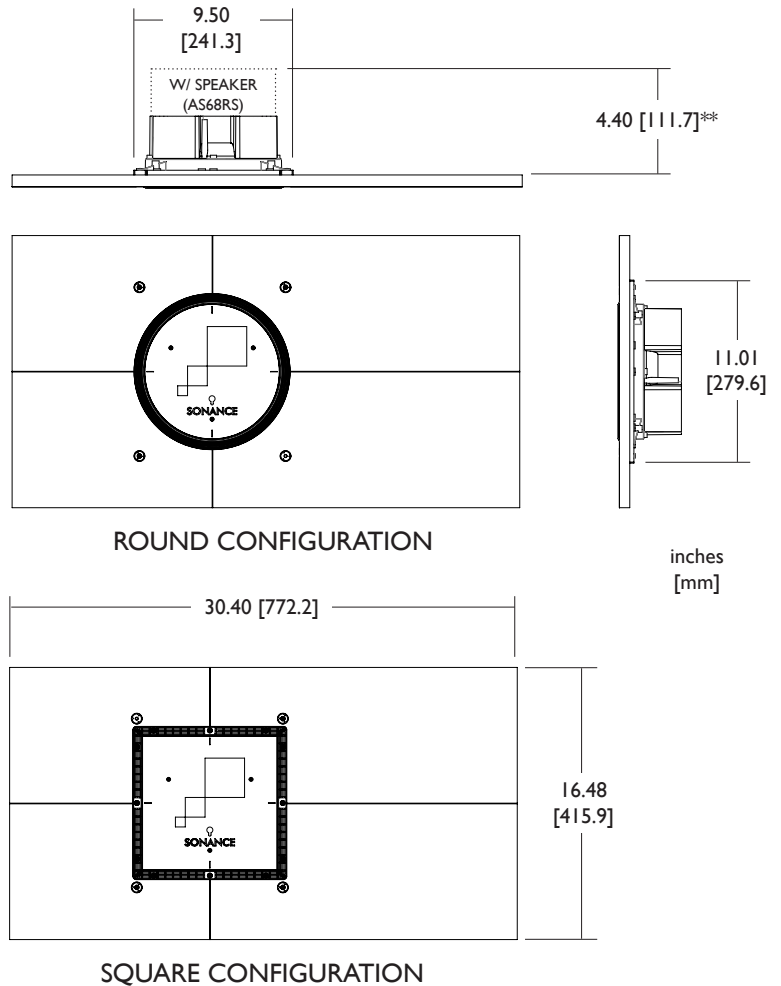
Plaster shims - adjusts the mud dam in 1/16" increments to accommodate up to 3/8" plaster thickness

Materials:

Panel - Pressed gypsum (fire class A, 95% recycled material). Gypsum material is impact, mold and moisture resistant.
Back Bracket - PC/ABS resin blend
Mud Dam - Precision Machined Aluminum

Environment:

For indoor use only.



** for depth of subwoofer and accessory options, see dimension drawings

ORDERING & ACCESSORY INFO

- 93051 - 5/8" Gypsum Mounting Platform AS Medium Round
- 93052 - 5/8" Gypsum Mounting Platform AS Medium Square
- 93049 - 1/2" Gypsum Mounting Platform AS Medium Round
- 93050 - 1/2" Gypsum Mounting Platform AS Medium Square

- 92343 - Medium Round Retrofit Enclosure
- 93042 - AS68RS Speaker
- 93074 - ASBPC6RS
- 93044 - BPS8 Subwoofer

991 Calle Amanecer
 San Clemente, CA 92673
 (949) 492 - 7777

SONANCE.COM

As part of its policy of continuous research and product development, the company reserves the right to change or withdraw specifications without prior notice.

Sonance and the Sonance Logo are trademarks of Dana Innovations. © 2014 Dana Innovations. All rights reserved.



SONANCE®

TYPE:

CATALOG:

PROJECT:

DATE: